

BROADWAY Ham & High

70p

The quality paper for Crouch End - Muswell Hill

Thursday October 1, 2015

HAMPSTEAD OFFICE
020 7435 4404
HIGHGATE OFFICE
020 8347 2600
WEST HAMPSTEAD OFFICE
020 7433 6868
www.g-h.co.uk
GOLDSCHMIDT
Established 1888 HOWLAND

Spurs star eyes European glory

see sport



Sanjeev Bhaskar, propless detective

see etctera



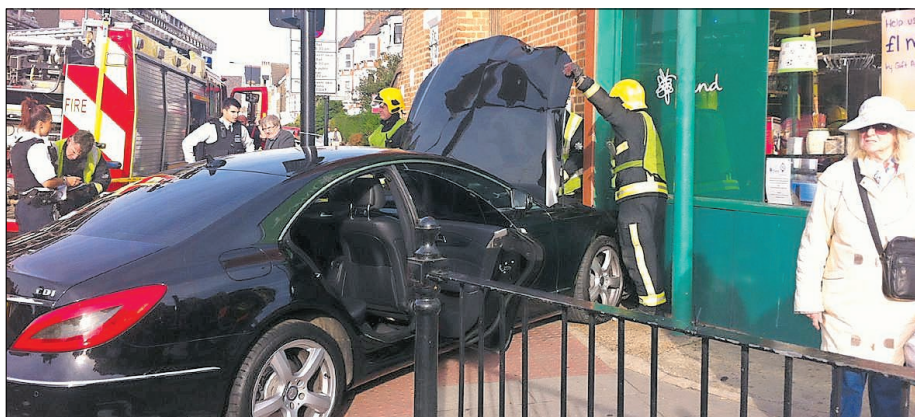
Drama as car smashes into charity shop

This was the dramatic scene after a car crashed into a charity shop in Stroud Green.

A black Mercedes careered into the distinctive green front of Mind charity shop, on the corner of Stapleton Hall Road and Stroud Green Road, at about 4.10pm on Tuesday.

Witnesses said an elderly man was nearly hit. Police and the fire brigade were called and the area was cordoned off.

For the full story, turn to page 7.



Emergency crews were called following the collision



Guide to the latest luxury properties

44 PAGES FREE INSIDE



FRANCIS HOLLAND SCHOOL
REGENT'S PARK

11+ OPEN
EVENING

1ST OCTOBER
2015

5.30pm - 7.00pm
(no booking required)

020 7723 0176

registrar@fhs-nw1.org.uk

www.fhs-nw1.org.uk



Elderly and the disabled were 'airbrushed'

Video also featured council's own contractors

Anna Behrmann
anna.behrmann@archant.co.uk

The disabled and elderly have been "airbrushed" out of efforts to promote Haringey, according to campaigners.

Council chiefs spent £20,000 on a short film as part of a £86,000 re-branding project.

Critics have pointed out that none of the people selected for the film have physical or mental disabilities - or are over the age of 50.

And it has emerged that at least two of the businesses that are featured in the 90 second film have commercial interests with the council.

John McAslan and Partners, featured prominently,



Mary Langan with her son James. She has hit out at the video

took over an empty shop to create a design hub after being picked by Haringey Council.

And Craving Coffee, which provides catering for the council, also appears.

Flourish Craft Bakery is fea-

tured, despite having moved to Watford last month, and no longer has premises in Haringey.

"It seems that the new

Continued on page 7



OPEN EVENTS 2015

Sixth Form

Monday 16 November
5pm - 7pm

Lower School

Thursday 15 October
9.30am to 11am

Upper School

Thursday 28 January
9.30am to 11am

Independent, informal,
co-educational day school
4-18 yrs

The King Alfred School
North End Road - London -
NW11 7HY

020 8457 5227

admissions@kingalfred.org.uk
www.kingalfred.org.uk



Car narrowly misses shopper

Manager reveals an elderly customer was 'lucky not to be hurt in smash'

Emma Youle

emma.youle@archant.co.uk

This was the dramatic scene after a car crashed into a charity shop in Stroud Green, reportedly narrowly missing an elderly man.

A black Mercedes careered into the distinctive green front of Mind charity shop, on the corner of Stapleton Hall Road and Stroud Green Road, at about 4.10pm on Tuesday.

Police and the fire brigade attended and the area was cordoned as firefighters inspected the vehicle's crumpled bonnet and searched the boot.

Arianna Destefanis, 35, assistant manager of Mind Stroud Green, said a man in his 70s, who had just left the store, suffered minor injuries in the collision.

A mother with a toddler in a buggy was inside the shop at the time, just centimetres from where the car hit, but escaped injury.

Ms Destefanis said: "We heard a big bang, a noise like something crashing into the shop and basically all the crockery on the shelves fell down."

"There was a lady standing next to it with a pram. She was very scared but luckily nobody was hurt."

"Another gentleman, who was a customer, was bleeding."

"He was outside and about to cross the road. He had just left the



■ The aftermath of Tuesday's crash

shop. The car literally just missed him by a few centimetres.

"We called the ambulance and police and took care of him."

She said the collision happened as the driver, described as a young man in his 30s, turned left at the crossroads from Crouch Hill into

Stapleton Hall Road.

"When I saw the driver coming out of the car, he was OK and he was not bleeding," she said. "It could have been worse."

Although the shop front is built from wood and the building shook on impact, there was hardly any

damage inside except for the broken china.

No arrests had been made as the *Broadway* went to press yesterday (Wednesday).

'Haringey is only for the young and fit'

■ from the front page

Haringey is only for the young and fit," said Mary Langan, of Save Autism Services Haringey.

Ms Langan is mother to 22-year-old James, who has a severe learning disabilities, autism and epilepsy.

"Any decent life for old people and people with disabilities depends upon being recognised and included in the community," she said. "It is a bitter irony that the rebranding project rests upon the declaration 'I'm In'. Not for me and my son evidently."

Emel Teymur who is a carer for her husband who has dementia, also described how she was "thrown" by the video. There were no references to residents who are poor or disabled, she said.

"It made me think, what are you going to do with them? Are you going to send them to another borough?"

The 68-year-old, who lives off Fortis Green, is concerned ahead of its consultation on cuts to adult social services on October 1.

A council spokesman said: "The Haringey Story is a celebration of the huge variety of people, locations and businesses that help to make Haringey the fantastic place that it is and features people from across the borough who are rightly proud to be a part of Haringey."



MANUEL SWADEN SOLICITORS

WILLS, PROBATE
& LASTING
POWERS OF
ATTORNEY

We offer a personal, sensitive
and exemplary service at our
conveniently located offices.

Contact Michael Swaden (partner)

Telephone: 020 7431 4999

Email: michaels@manuelswaden.co.uk

340 West End Lane
(corner of Finchley Road)
London NW6 1LN



To advertise in The Express Series
please call 020 7433 0101

Child Care & Adoption

Specialist legal advice from a "top tier ranking team" with "very strong and experienced public child law practitioners" (Chambers UK Legal Directory)

Our experienced family solicitors will:

- ♦ Take the time to listen
- ♦ Understand your circumstances
- ♦ Advise you on all of your options



"Thanks for all your hard work on behalf of the children, I really appreciated your clarity, confidence and experience and your passionately child focused approach". Mrs L

For peace of mind, call
0800 437 0322

180 North Gower Street, London, NW1 2NB
www.hja.net



hodge jones & allen



**An award winning nursing home
in the heart of North London**

- Residential care for the elderly
- Dementia care specialist
- Nursing care for those with physical disabilities
- Respite (short term) care available



Our facilities include

- All rooms are en-suite with Freeview TV and broadband
- Choice of lounges and dining areas
- Landscaped courtyards and large terraces
- Hair and beauty salon with spa treatments available
- Daily activities programme
- Specialist diets and different cuisines catered for
- Need a break? We offer short term stay for non residents
- Fabulous transport links
- 24 hr care and service delivered

"We are pleased to announce our new Day Care facilities at Priscilla Wakefield Nursing Home. Our dedicated team will be on hand to assist with all activities of daily living, from 7am to 7pm, Monday to Sunday, all meals are included. We cater for clients with Dementia and Nursing needs". For pricing or further information please contact Caroline, Manager.

For further information, a brochure or to arrange a visit, please contact
Caroline on 020 8808 7196

Web: www.pwhnursinghome.co.uk
Email: info@pwhnursinghome.co.uk

'Big enough to cope, small enough to Care'